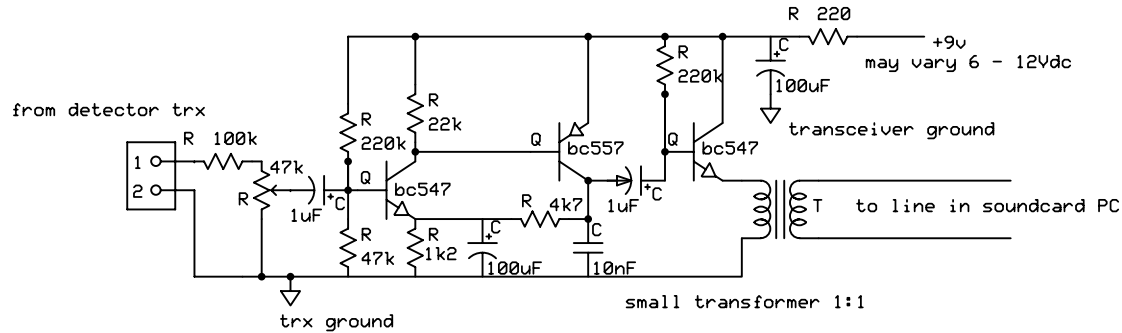


## Small pre-amp for Echolink

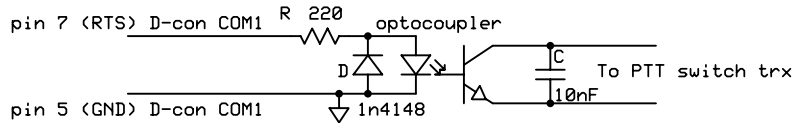


Using SWEEX soundcard AF from transceiver is mostly too low. This simple transistor amp will amplify from 50mV to 1V. Transistors are not critical, however experiment with 4k7 resistor to get best results.

Transformer is just for isolating 1:1 ratio will do fine, 1:4 even better!

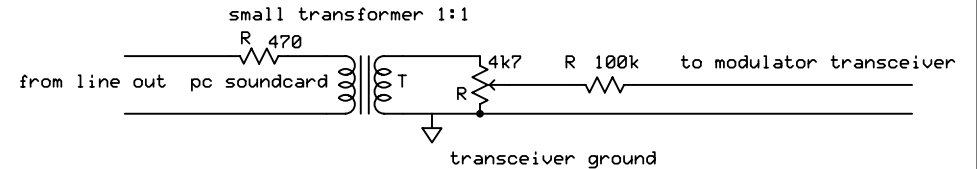
## PTT circuit

Just picked from somebody else...

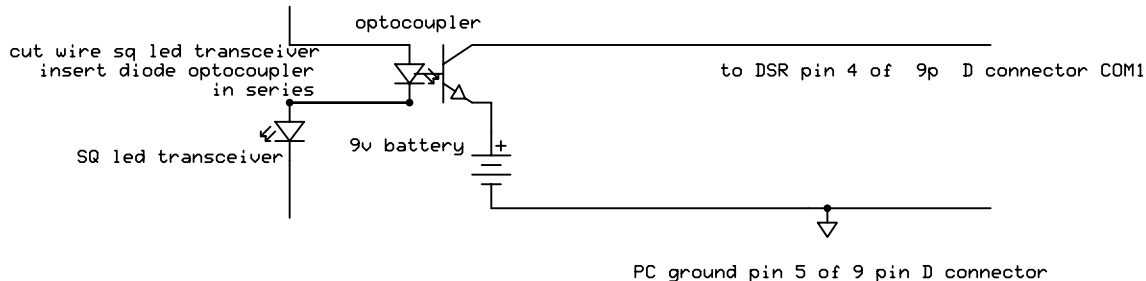


## from PC to trx

No comment! Just from A to B  
Trafo 1:1 or 1:4 .



## Squelch circuit



For those transceivers where SQ info is hard to get.... If you have SQ-led you'r problems are now solved! Cut the wire and put an optocoupler in series. Galvanic isolation, I used a 9V battery, which will last for years!

P A 3 A B K		
Echolink Simple Interface		
	Rev 1.0	Page 1 of 1
	19-7-04	